

Mews Houses

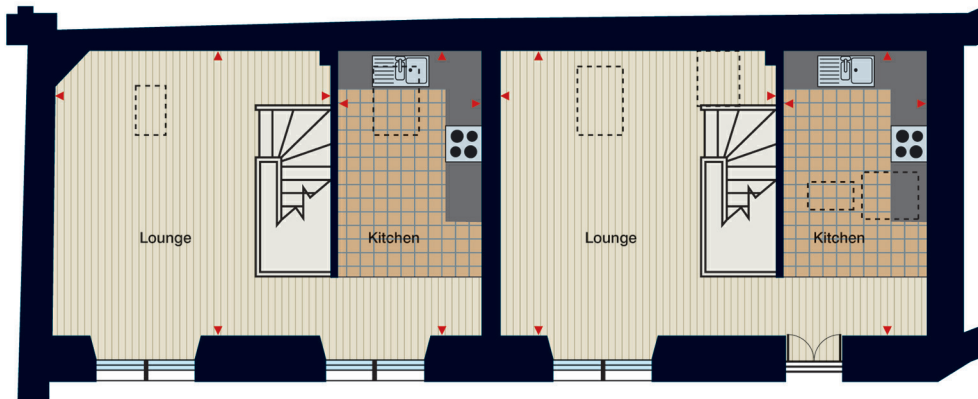
Mews House 20

Upper Floor

Lounge	4.726 x 4.617m	(15'6" x 15'1")
Kitchen	4.726 x 2.400m	(15'10" x 7'10")

Lower Floor

Bedroom 1	4.030 x 2.571m	(13'2" x 8'5")
Bedroom 2	4.030 x 2.400	(13'2" x 7'10")
Bath	1.950 x 1.900m	(6'4" x 6'2")



Mews House 21

Upper Floor

Lounge	4.726 x 4.617m	(15'6" x 15'1")
Kitchen	4.726 x 2.400m	(15'10" x 7'10")

Lower Floor

Bedroom 1	4.030 x 2.571m	(13'2" x 8'5")
Bedroom 2	4.030 x 2.400	(13'2" x 7'10")
Bath	1.950 x 1.900m	(6'4" x 6'2")



NOTE: Floor plans shown are taken from the architects' design proposals and are not drawn to scale. The room dimensions given have been taken from the architect's plans. Equivalent Imperial measurements are rounded down to the nearest inch.

All kitchen, bathroom and en suite layouts are provisional and may be subject to alteration.